



Wibu Services

Copyright

All rights reserved. No part of this documentation, the accompanying software, or other components of the described product or service may be reproduced or transmitted in any form or by any means, electronic or mechanical, including photocopying and recording, for any purpose other than the personal use of the purchaser without the express written permission of Wibu-Systems.

While the data contained in this document has been written with all due care, Wibu-Systems does not warrant or assume responsibility or represent that the data is free from errors or omissions. Wibu-Systems expressly reserve the right to change programs or this documentation without prior notice. WIBU®, CodeMeter®, SmartShelter® are registered trademarks of Wibu-Systems. All other brand names and product names used in this documentation are trade names, service marks, trademarks, or registered trademarks of their respective owners. © Copyright 2013 by Wibu-Systems BV

Wibu-Systems Ltd (United Kingdom + Ireland)

The Mansion | Bletchley Park | Bletchley

MK3 6DS Milton Keynes

Tel.: +44-20-314 747 27 | Fax: +44-20-314 747 28

www.wibu.com/uk | support@wibu.co.uk

Wibu-Systems Iberia (Spain + Portugal)

Ribera del Loira 46 | Campo de las Naciones

28042 Madrid

Tel.: +34-91-414 8768 | Fax: +34-91-414 8769

www.wibu.com/es | support@wibu.es

Wibu-Systems BV (The Netherlands)

Adam Smithstraat 33 | 7559 SW Hengelo

Tel.: +31-74-7501495 | Fax: +31-74-7501496

www.wibu.com/nl | support@wibu-systems.nl

Wibu-Systems NV (Belgium + Luxembourg)

F. Rooseveltplaats 12, President Building, 8th floor | 2060 Antwerp

Tel.: +32-3-400 03 14 | Fax: +32-3-400 28 40

www.wibu.com/b | support@wibu.be

WIBU_SYSTEMS sarl (France)

20-22, Rue des Petits Hôtels | 75010 Paris

Tél: +33 (0)1 73 03 04 91 | Fax +33 (0)1 73 03 04 01

www.wibu.com/fr | support@wibu.fr

Team responsible for the services



Ivo Meijer
Support engineer &
security specialist



Marcel Hartgerink
Director local support
& security specialist



Wolfgang Voelker
Director Support &
Product Management



Christian
Goebel



Marc
Beissmann



Alvaro
Forero



Nikolai
Stix



Dirk
Watteroth

Table of Contents

1	Overview	4
2	Wibu Training Services	5
2.1	Protection and Licensing of Software.....	5
2.2	Protection and Licensing of .Net Software	6
2.3	CodeMeter License Central and Back-Office Integration	7
2.4	User training CodeMeter License Desktop.....	8
2.5	User training CodeMeter License Internet.....	8
2.6	Protection and Licensing of Java Applications	9
2.7	Software protection with the CodeMeter Core-API	9
2.8	Software protection with the WibuKey.....	10
2.9	Document Protection with SmartShelter and the CodeMeter Secure Data Layer.....	10
2.10	Secure access to web sites and web applications with CodeMeter Identity	11
2.11	Masterclasses Software Monetisation, Licensing & Protection	12
3	Wibu Support Services	13
3.1	Scope of Services	13
3.1.1	Hotline	13
3.1.2	Wibu Knowledge Base	13
3.1.3	Support via Remote Access	13
3.1.4	Personal Contact Person	13
3.1.5	Annual Service Review	13
3.1.6	Response Times	14
3.1.7	Updates	14
3.1.8	Anti-piracy Option.....	14
3.2	Service Level Agreements Compared.....	15
4	Wibu Operating Services	16
4.1	Architecture and Security	16
4.2	Scope of Service	16
4.3	Integration Options	17
4.4	Datacenter Edition	17
4.5	Dedicated Server	17
4.6	Features	18
5	About Wibu Systems.....	19
6	Contact details	20

1 Overview Wibu Services

Wibu Services provides you comprehensive support along the complete lifecycle of your products.

Our Pre-Sales Consulting Team supports you in evaluating our solutions for protecting and licensing your software.

With Wibu Consulting Services we support you in the design phase of your solution. In close cooperation with you our Wibu Consulting Services Team works out the optimal concept for protecting and licensing your software. No matter what your focus is: revenue increase by secure protection or cost reduction by process optimization and licensing integration. Our experts with many years of know-how stand by.

In addition, our Wibu Professional Services Team supports you in implementing your concept. Save your valuable time during introduction and implementation. Use our knowledge and experience to meet your individual requirements: fast, easy, and cost-saving. For example, our service portfolio covers: implementation of a license update client, graphical customization, individual exception handling modules, and integration into ERP solutions.

With Wibu Training Services we offer you easy introduction into the areas of software protection and licensing. Our training courses are available as open training in Hengelo (NL), Driebergen (NL), Antwerp (B), Bletchley (UK), Paris (FR), Lyon (FR) and Madrid (ES); in-company training is also possible. Wibu-Systems organizes several product trainings for the implementation of software protection, software licensing, document protection, media protection, and access control.

Wibu Support Services supports you while operating your solution. Our Wibu Support Services Team assists you in error diagnostics and error fixing: in the protected software on the end user PC and in the licensing solution on your servers.

Our Wibu Operating Services Team hosts your licensing solution on our servers. Save yourself from the effort of installing and configuring a separate CodeMeter License Central and let us operate your solution, you can always manage the CLC via remote access.



2 Wibu Training Services

You can register for an open training or a special session with an unlimited amount of participants from your company. The trainings are held either at the locations mentioned below or in-house. The sessions will be held in English, French, Dutch, German or Spanish. For the in-house trainings please add the travel expenses for the consultant to the costs mentioned below.

For the open courses you pay per participant, the maximum amount of participants is 12. The trainings start at 09:00 hour at the Wibu offices in Bletchley Park (UK) Madrid (ES), Paris (FR), Hengelo (NL) and Antwerp (B). There are also sessions in Driebergen (NL) and Lyon (FR). In the event that a training covers more than 3 participants, booking an in-house training pays off. The number of participants then is unlimited. In-house trainings can be adapted to meet your specific requirements, if the training you need is not described in this brochure please contact us. WibuConcepts, the consultancy department of Wibu-Systems, can organize a session on demand.

For CEOs, CTOs, Product Managers, Software Development Managers and Software Architects that would like to know more about the challenges in software licensing and software protection and the basics of CodeMeter and the CodeMeter License Central we organise masterclasses about licensing & protection of software. Please go to section 2.11 on page 12 for more details.

2.1 Protection and Licensing of Software

Protection and Licensing of Software			
Course number: 6310-21-100 6310-21-200			
Dates of the open sessions:	Wednesday, September 4 th , 2013	Hengelo (NL)	Beveiliging en Licentiëring van Software
	Tuesday, September 24 th , 2013	Milton Keynes (UK)	Protection and Licensing of Software
	Wednesday, October 2 nd , 2013	Madrid (ES)	Protección de Software y Gestión de Licencias
	Tuesday, November 5 th , 2013	Antwerp (B)	Beveiliging en Licentiëring van Software
	Tuesday, November 12 th , 2013	Paris (FR)	Protection des logiciels et gestion des licences
	Tuesday, November 26 th , 2013	Driebergen (NL)	Beveiliging en Licentiëring van Software
	Monday, December 2 nd , 2013	Lyon (FR)	Protection des logiciels et gestion des licences
	Tuesday, January 21 st , 2014	Hengelo (NL)	Beveiliging en Licentiëring van Software
	Wednesday, February 19 th , 2014	Milton Keynes (UK)	Protection and Licensing of Software
	Wednesday, March 5 th , 2014	Madrid (ES)	Protección de Software y Gestión de Licencias
	Thursday, March 27 th , 2014	Antwerp (B)	Beveiliging en Licentiëring van Software
	Tuesday, April 29 th , 2014	Paris (FR)	Protection des logiciels et gestion des licences
	Tuesday, May 27 th , 2014	Driebergen (NL)	Beveiliging en Licentiëring van Software
	Tuesday, June 24 th , 2014	Lyon (FR)	Protection des logiciels et gestion des licences
Agenda:	09:00 – 09:30	Registration, coffee and tea	
	09:30 – 11:00	Welcome, overview, CodeMeter basics – license management	
	11:00 – 12:30	AxProtector & IxProtector – Automatic and individual integration	
	12:30 – 13:30	Lunch	
	13:30 – 15:00	Activation of licenses, realisation of license models, advanced features	
	15:00 – 16:00	Hands-on (Please bring a notebook with your application)	
	16:00 – 16:30	Questions & Answers	
Requirements:	No previous knowledge required		
Target group:	Software Developers, Product Managers		
Available as:	6310-21-100:	Seat in the open 1-day training	£ 373 / € 399
	6310-21-200:	In-house training (excl. travel-costs)	£ 1122 / € 1200

2.2 Protection and Licensing of .NET Applications

Protection and Licensing of .NET Applications

Course number: 6310-22-100 | 6310-22-20

Dates of the open sessions:	Wednesday, September 4 th , 2013	Hengelo (NL)	Beveiliging en Licentiëring van .NET Applicaties
	Tuesday, September 24 th , 2013	Milton Keynes (UK)	Protection and Licensing of .NET Applications
	Wednesday, October 2 nd , 2013	Madrid (ES)	Protección de Software .NET y Gestión de Licencias
	Tuesday, November 5 th , 2013	Antwerp (B)	Beveiliging en Licentiëring van .NET Applicaties
	Tuesday, November 12 th , 2013	Paris (FR)	Protection des logiciels .NET et gestion des licences
	Tuesday, November 26 th , 2013	Driebergen (NL)	Beveiliging en Licentiëring van .NET Applicaties
	Monday, December 2 nd , 2013	Lyon (FR)	Protection des logiciels .NET et gestion des licences
	Tuesday, January 21 st , 2014	Hengelo (NL)	Beveiliging en Licentiëring van .NET Applicaties
	Wednesday, February 19 th , 2014	Milton Keynes (UK)	Protection and Licensing of .NET Applications
	Wednesday, March 5 th , 2014	Madrid (ES)	Protección de Software .NET y Gestión de Licencias
	Thursday, March 27 th , 2014	Antwerp (B)	Beveiliging en Licentiëring van .NET Applicaties
	Tuesday, April 29 th , 2014	Paris (FR)	Protection des logiciels .NET et gestion des licences
	Tuesday, May 27 th , 2014	Driebergen (NL)	Beveiliging en Licentiëring van .NET Applicaties
	Tuesday, June 24 th , 2014	Lyon (FR)	Protection des logiciels .NET et gestion des licences

Agenda:	09:30 – 11:00	Welcome, overview, CodeMeter basics – license management
	11:00 – 12:30	AxProtector & IxProtector – Automatic and individual integration
	12:30 – 13:30	Lunch
	13:30 – 15:00	Activation of licenses, realisation of license models, advanced features
	15:00 – 16:00	Hands-on (Please bring a notebook with your application)
	16:00 – 16:30	Questions & Answers

Requirements: No previous knowledge required

Target group: Software Developers, Product Managers

Available as:	6310-22-100: Seat in the open 1-day training	£ 373 / € 399
	6310-22-200: In-house training (excl. travel-costs)	£ 1122 / € 1200

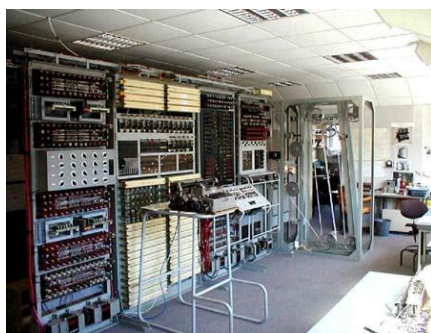


Photo 3, 4, and 5: UK-Training centre, Bletchley Park, with the famous Enigma coding machines and the Colossus, world's first electronic computer.

2.3 CodeMeter License Central and Back-Office Integration

CodeMeter License Central and Back-Office Integration			
Course number:	6311-11-100 6311-11-200		
Dates of the open sessions:	Thursday, September 5 th , 2013	Hengelo (NL)	CodeMeter License Central en Back-Office Integratie
	Wednesday, September 25 th , 2013	Milton Keynes (UK)	CodeMeter License Central and Back-Office Integration
	Thursday, October 3 rd , 2013	Madrid (ES)	CodeMeter License Central e Integración Back-Office
	Wednesday, November 6 th , 2013	Antwerp (B)	CodeMeter License Central en Back-Office Integratie
	Wednesday, November 13 th , 2013	Paris (FR)	CodeMeter License Central et Intégration Back-Office
	Wednesday, November 27 th , 2013	Driebergen (NL)	CodeMeter License Central en Back-Office Integratie
	Tuesday, December 3 rd , 2013	Lyon (FR)	CodeMeter License Central et Intégration Back-Office
	Wednesday, January 22 nd , 2014	Hengelo (NL)	CodeMeter License Central en Back-Office Integratie
	Thursday, February 20 th , 2014	Milton Keynes (UK)	CodeMeter License Central and Back-Office Integration
	Thursday, March 6 th , 2014	Madrid (ES)	CodeMeter License Central e Integración Back-Office
	Friday, March 28 th , 2014	Antwerp (B)	CodeMeter License Central en Back-Office Integratie
	Wednesday, April 30 th , 2014	Paris (FR)	CodeMeter License Central et Intégration Back-Office
	Wednesday, May 28 th , 2014	Driebergen (NL)	CodeMeter License Central en Back-Office Integratie
	Wednesday, June 25 th , 2014	Lyon (FR)	CodeMeter License Central et Intégration Back-Office
Agenda:	09:00 – 09:30 Registration, coffee and tea 09:30 – 10:30 CodeMeter License Central – basics 10:30 – 11:30 Configuration of products 11:30 – 12:30 Architecture and protocols 12:30 – 13:30 Lunch 13:30 – 14:00 Connector – automatic creation of tickets 14:00 – 14:30 Gateway – getting licenses from your application using a Gateway 14:30 – 15:00 Further settings and installation 15:00 – 16:00 Hands-on (Please bring a notebook with your application) 16:00 – 16:30 Questions & Answers		
Requirements:	Basic knowledge of CodeMeter		
Target group:	Software Developer, Administrator, Web-Programmer		
Available as:	6311-11-100: Seat in the open 1-day training		£ 373 / € 399
	6311-11-200: In-house training (excl. travel-costs)		£ 1122 / € 1200



Photo 1: Wibu-office & training centre in Hengelo (NL)



Photo 2: Wibu-office & training centre in Madrid (ES)

2.4 User training CodeMeter License Central Desktop

User training CodeMeter License Central Desktop			
Course number:		6311-21-100	
Dates of the open sessions:	Thursday, September 5 th , 2013	Hengelo (NL)	CodeMeter License Central Desktop
	Wednesday, September 25 th , 2013	Milton Keynes (UK)	CodeMeter License Central Desktop
	Thursday, October 3 rd , 2013	Madrid (ES)	CodeMeter License Central Desktop
	Wednesday, November 6 th , 2013	Antwerp (B)	CodeMeter License Central Desktop
	Wednesday, November 13 th , 2013	Paris (FR)	CodeMeter License Central Desktop
	Wednesday, November 27 th , 2013	Driebergen (NL)	CodeMeter License Central Desktop
	Tuesday, December 3 rd , 2013	Lyon (FR)	CodeMeter License Central Desktop
	Wednesday, January 22 nd , 2014	Hengelo (NL)	CodeMeter License Central Desktop
	Thursday, February 20 th , 2014	Milton Keynes (UK)	CodeMeter License Central Desktop
	Thursday, March 6 th , 2014	Madrid (ES)	CodeMeter License Central Desktop
	Friday, March 28 th , 2014	Antwerp (B)	CodeMeter License Central Desktop
	Wednesday, April 30 th , 2014	Paris (FR)	CodeMeter License Central Desktop
	Wednesday, May 28 th , 2014	Driebergen (NL)	CodeMeter License Central Desktop
	Wednesday, June 25 th , 2014	Lyon (FR)	CodeMeter License Central Desktop
Agenda:	09:00 – 09:30	Registration, coffee and tea	
	09:30 – 10:30	CodeMeter License Central Desktop	
	10:30 – 11:30	Configuration of products	
	11:30 – 12:30	Hands-on (Please bring a notebook with your application)	
	12:30 – 13:30	Lunch	
Requirements:	No previous knowledge required		
Target group:	Sales Employees, Support Employees, Product Manager		
Available as:	6311-21-100: Seat in the open 1/2-day training		£ 186 / € 199

2.5 User training CodeMeter License Central Internet

User training CodeMeter License Central Internet			
Course number:	6311-21-200		
Agenda:	09:00 – 09:30	Registration, coffee and tea	
	09:30 – 09:45	Welcome, overview	
	09:45 – 11:30	CodeMeter basics, license management	
	11:30 – 12:30	CodeMeter License Central – basics	
	12:30 – 13:30	Lunch	
	13:30 – 15:00	Configuration of products	
	15:00 – 16:00	Hands-on (Please bring a notebook with your application)	
	16:00 – 16:30	Questions & Answers	
Requirements:	No previous knowledge required		
Target group:	Sales Employees, Support Employees, Product Manager		
Available as:	6311-21-200:	In-house training (excl. travel-costs)	£ 1122 / € 1200

2.6 Protection and Licensing of Java Applications

Protection and Licensing of Java Applications		
Course number:	6310-13-200	
Agenda:	09:00 – 09:30 Registration, coffee and tea 09:30 – 09:45 Welcome, overview 09:45 – 11:00 CodeMeter basics, license management 11:00 – 11:30 AxProtector for Java – automatic integration 11:30 – 12:30 Possibilities for individual implementation with the Core-API 12:30 – 13:30 Lunch 13:30 – 14:00 Activation of Licenses with CodeMeter 14:00 – 14:30 Realisation of license models with CmDongle & CmActLicense 14:30 – 15:00 CodeMeter – advanced features 15:00 – 16:00 Hands-on (Please bring a notebook with your application) 16:00 – 16:30 Questions & Answers	
Requirements:	No previous knowledge required	
Target group:	Java-Developer, Product Manager, Support Employees	
Available as:	6310-13-200: In-house training (excl. travel-costs)	£ 1122 / € 1200

2.7 Software protection with the CodeMeter Core-API

Software protection with the CodeMeter Core-API		
Course number:	6310-31-200	
Agenda:	09:00 – 09:30 Registration, coffee and tea 09:30 – 09:45 Welcome, overview 09:45 – 11:00 CodeMeter basics, license management 11:00 – 11:30 Cryptography basics 11:30 – 12:30 Possibilities for individual implementation with the Core-API 12:30 – 13:30 Lunch 13:30 – 14:00 Activation of Licenses with CodeMeter 14:00 – 14:30 Realisation of license models with CmDongle & CmActLicense 14:30 – 15:00 CodeMeter – advanced features 15:00 – 16:00 Hands-on (Please bring a notebook with your application) 16:00 – 16:30 Questions & Answers	
Requirements:	Programming knowledge in C, C++, C#, or Delphi	
Target group:	Software Developer	
Available as:	6310-31-200: In-house training (excl. travel-costs)	£ 1402 / € 1500

2.8 Software protection with the WibuKey

Software protection with the WibuKey			
Course number:	6320-13-200		
Agenda:	09:00 – 09:30	Registration, coffee and tea	
	09:30 – 09:45	Welcome, overview	
	09:45 – 11:00	WibuKey basics – license management	
	11:00 – 12:30	AxProtector & IxProtector for .NET – Automatic and individual Integration	
	12:30 – 13:30	Lunch	
	13:30 – 14:00	Realisation of license models	
	14:00 – 14:30	Programming of licenses	
	14:30 – 15:00	Simultaneous integration of CodeMeter	
	15:00 – 16:00	Hands-on (Please bring a notebook with your application)	
	16:00 – 16:30	Questions & Answers	
Requirements:	No previous knowledge required		
Target group:	Software Developer, Product Manager, Support Employees		
Available as:	6320-13-200:	In-house training (excl. travel-costs)	£ 1122 / € 1200

2.9 Document Protection with SmartShelter and the CodeMeter Secure Data Layer

Document Protection with SmartShelter and the CodeMeter Secure Data Layer			
Course number:	6313-11-200		
Agenda:	09:00 – 09:30	Registration, coffee and tea	
	09:30 – 09:45	Welcome, overview	
	09:45 – 11:00	CodeMeter basics, license management	
	10:30 – 11:00	Protection of PDF-files with SmartShelter PDF	
	11:00 – 12:00	Encryption of all sorts of documents with AxProtector	
	12:00 – 13:00	Lunch	
	13:00 – 13:30	Decryption of protected documents with CodeMeter SDL (Secure Data Layer)	
	13:30 – 14:00	Delivery of CodeMeter SDL	
	14:00 – 15:00	CodeMeter License Central – basics	
	15:00 – 16:00	Hands-on (Please bring a notebook with your application)	
	16:00 – 16:30	Questions & Answers	
Requirements:	No previous knowledge required		
Target group:	Product Manager, Support Employees		
Available as:	6313-11-200:	In-house training (excl. travel-costs)	£ 1122 / € 1200

2.10 Secure access to web sites and web applications with CodeMeter Identity

Secure access to web sites and web applications with CodeMeter Identity			
Course number:	6315-11-200		
Agenda:	09:00 – 09:30 Registration, coffee and tea 09:30 – 09:45 Welcome, overview 09:45 – 11:00 CodeMeter basics, license management 11:00 – 11:30 Authentication with asymmetric cryptography 11:30 – 12:30 Integration at the server-side 12:30 – 13:30 Lunch 13:30 – 14:30 Integration at the client-side 14:30 – 15:00 Delivery of the CodeMeter Runtime 15:00 – 15:30 Transfer of the keys 15:30 – 16:00 Hands-on (Please bring a notebook with your application) 16:00 – 16:30 Questions & Answers		
Requirements:	No previous knowledge required		
Target group:	Web-Programmer, System administrator		
Available as:	6315-11-200:	In-house training (excl. travel-costs)	£ 1122 / € 1200

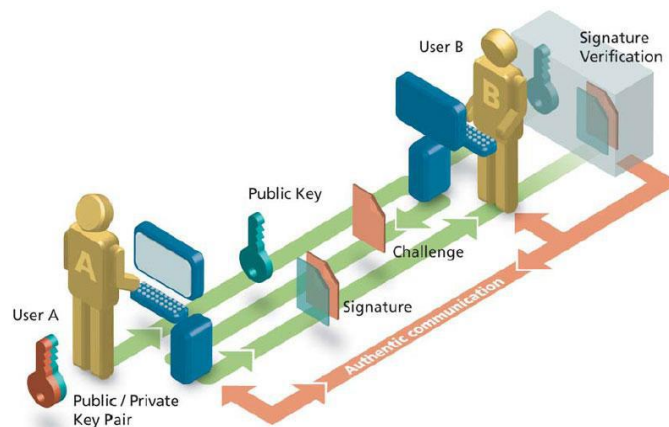


Figure 2: Web Authentication with CodeMeter Identity

2.11 Masterclasses Software Monetisation, Licensing & Protection

Masterclasses Software Monetisation, Licensing & Protection			
Course number:	6311-21-100		
Dates of the open sessions:	Thursday, June 27 th , 2013	Enschede (NL)	11:00 – 15:00 hour
	Monday, September 23 rd , 2013	London (UK)	11:00 – 15:00 hour
	Tuesday, September 24 th , 2013	Brussels (B)	11:00 – 15:00 hour
	Wednesday, September 25 th , 2013	Eindhoven (NL)	11:00 – 15:00 hour
	Thursday, October 24 th , 2013	Utrecht (NL)	11:00 – 15:00 hour
	Thursday, November 28 th , 2013	Rotterdam (NL)	11:00 – 15:00 hour
	Wednesday, December 4 th , 2013	Antwerp (B)	11:00 – 15:00 hour
More dates and locations on:			
- NL+B: http://www.wibu.com/nl/masterclass.html			
- FR+B+LUX: http://www.wibu.com/fr/seminaires-secure-code.html			
- UK+IRL+PT: http://www.wibu.com/uk/training-reverse-engineering-protection.html			
- ES: http://www.wibu.com/es/proteccion-ingenieria-inversa.html			
Agenda:	Topics: <ul style="list-style-type: none"> • Code protection against illegal use • Software protection against reverse engineering • Software monetisation, licensing of software, hardware and software-based • Back-Office integration 		
	Our special offer: <ul style="list-style-type: none"> • Free entrance to our Masterclass that includes lunch or diner • A free unrestricted CodeMeter test-kit to test our technology • A free upgrade of your CodeMeter for CodeMeter holders 		
Requirements:	No previous knowledge required		
Target group:	CEO, CTO, Product Manager, Software Development Manager and Software Architect		
Available as:	Please contact our sales for your free seat in this 3-hour		

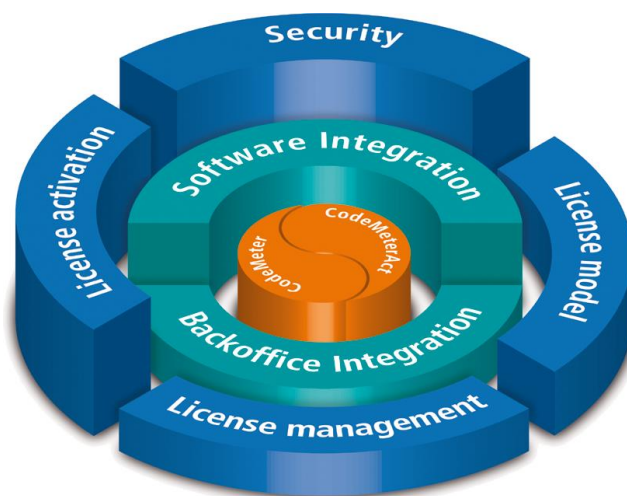


Figure 1: Integration of CodeMeter(Act) in the software and Back-Office

3 Wibu Support Services

Wibu-Systems provides you four service levels: "Free", "Silver", "Gold" and "Rhine Gold". Select the package meeting your requirements.

3.1 Scope of Services

3.1.1 Hotline

Our Wibu Support Services Team assists you in error diagnostics and error fixing and is available to you per phone or e-mail:

- In case of Free, Silver & Gold Support: workdays in The Netherlands from 8:30 a.m. to 5:00 p.m. (GMT+1)
- In case of Rhine Gold Support: workdays in Germany from 8:00 a.m. to 5:00 p.m. (GMT+1). We provide a First Level Support Hotline for your users and a Second Level Hotline (incl. a priority phone number) for you as software developer

3.1.2 Wibu Knowledge Base

The Wibu Knowledge Base is available to you 24 hours 7 days a week via internet. Here you find in a FAQ database answers to frequently asked questions. See <http://www.wibu.com/en/faq-codemeter.html>.

3.1.3 Support via Remote Access

In case of Silver Support or higher the experts also assist you and your users in error diagnostics and error fixing in the protected software via remote access. The remote maintenance additionally covers support prior to the release, when integrating the software protection schemes of CodeMeter (CmDongle & CmActLicense) into your software.

3.1.4 Personal Contact Person

In case of Silver Support or higher a personal contact person provides you with a designated contact person from the Wibu Support Services Team already familiar with your requirements and system environment. On processing your inquiry this contact person will preferentially answer your questions.

3.1.5 Annual Service Review

In the service levels "Gold" and "Rhine Gold", your personal contact person creates a project description of all specific requirements, general conditions and your individual implementation during an annual, one day workshop. This ensures that your service cases will be processed on the highest quality level on base of the latest information.

3.1.6 Response Times

The response time – during the specified hotline hours – is defined as the time period between inquiry receipt and processing start by a technician of Wibu-Systems. On starting of the processing you will receive a respective feedback. For example, in the case of a response time of 9 hours and an inquiry receipt at 4:00 p.m. the processing will start not later than 4:30 p.m. the following day.

The guaranteed response time depends on the service level selected and the priority of your inquiry:

Priority 1: Showstopper

An error which is reproducible for several systems and for which no workaround is available, e.g. several different clients cannot collect licenses from CodeMeter License Central.

Priority 2: Moderate Error

An error which affects a single system, e.g. a special client cannot collect the license from CodeMeter License Central while the other clients work properly.

Priority 3: Flaw

An error which has marginal effects on operating the solution or for which a workaround exists, e.g. a display error in CodeMeter License Central.

3.1.7 Updates

In the case of updates we distinguish:

CodeMeter Runtime

CodeMeter SDK (AxProtector, Software Protection API, CodeMeter Core API, programming applications, samples, etc.)

CodeMeter License Central Desktop Edition

CodeMeter License Central Internet Edition (subversion)

CodeMeter License Central Internet Edition (main version)

3.1.8 Anti-piracy Option

Using the anti-piracy option increases the protection level of your software. Wibu-Systems takes over for you the search for pirated copies of your protected software. This option covers a monthly report, acquiring the crack (if possible), analyzing the crack, and recommendation of counter-measures.

3.2 Service Level Agreements Compared

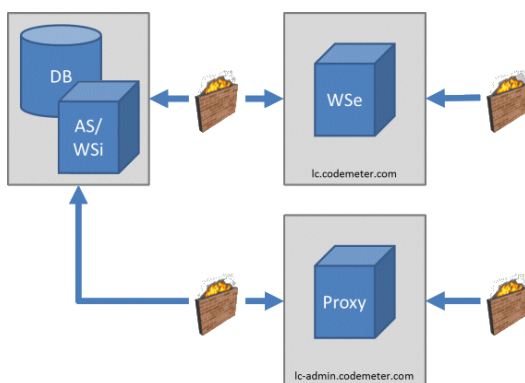
Service	Free	Silver	Gold	Rhine Gold From Karlsruhe
Error diagnostics and error fixing support via e-mail	✓	✓	✓	✓
Error diagnostics and error fixing support via e-mail for the end user	✓	✓	✓	✓
Error diagnostics and error fixing support via phone	✓	Priority hotline	Priority hotline	Priority hotline
Error diagnostics and error fixing support via phone for the end user	✓	✓	✓	✓
Error diagnostics and error fixing support via remote access		✓	✓	✓
Error diagnostics and error fixing support via remote access for the developer		✓	✓	✓
Access to the Wibu Knowledge Base	✓	✓	✓	✓
Remote maintenance and remote support for CodeMeter License Central		✓	✓	✓
Remote support on question regarding integration into the software		✓	✓	✓
Guaranteed response time (in working hours for priority 1 priority 2 priority 3)		3 18 27	2 9 18	1 4 9
Individual contact person		✓	✓	✓
Maximum amount of persons that receive direct support		2	4	4
Annual Service Review			✓	✓
Updates CodeMeter Runtime, CodeMeter SDK, CodeMeter License Central Desktop Edition	✓	✓	✓	✓
Updates CodeMeter License Central Internet Edition		✓	✓	✓
Price (per year)	Free of charge	€ 2000 £ 1870	€ 4000 £ 3740	€ 8000 £ 7480
Anti-piracy option		Price on request	Price on request	Price on request

4 Wibu Operating Services

Wibu Operating Services runs your CodeMeter License Central. You have the option to select between a Datacenter Edition and a Dedicated Server.

4.1 Architecture and Security

A hosted CodeMeter License Central uses the recommended standard installation. A distinction is made between the WebServer intern (WSi) and the WebServer extern (WSe). Both access the Database (DB) using the Application Server (AS).



Architecture Overview

We provide two different accesses to the CodeMeter License Central for you and your customers:

- 1 Your customer accesses the collecting pages (Depot) of the CodeMeter License Central using `lc.codemeter.com`. These pages are customizable to your corporate design and internal processes. Optionally our Wibu Professional Service Team does this for you.
- 2 You use a protected access (`https`) to access `lc-admin.codemeter.com`. You have full access to the WebServer intern and are able to perform all actions yourself you would otherwise also perform if having an in-house CodeMeter License Central. The access covers a client certificate authenticating your PC with the CodeMeter License Central.

This two-tier architecture, WSe in the DMZ and the rest behind the firewall, we offer you state-of-the-art security. Even if an attacker should be successful to access the first server using an exploit, access to the database is still prevented. Coupled with our internal early-warning system we are able to react before an attacker is able to access your license data.

Your access to the CodeMeter License Central is protected by `https`, client certificate, and user name/password.

4.2 Scope of Service with Wibu Operating Services

A system is secure only if kept updated. This task covers the greater part of Wibu Operating Services. Moreover, the services cover:

- 1 Providing a server for the CodeMeter License Central
- 2 Installing and configuring the CodeMeter License Central
- 3 Importing operating system updates
- 4 Importing CodeMeter License Central updates
- 5 Monitoring availability, we guarantee that it will be at least 99,9%
- 6 Monitoring and performing attack counter-measures
- 7 Daily database backup

4.3 Integration Options

For the integration into an online shop all Connectors are available. The protection of the connection between online shop and CodeMeter License Central is individually configured depending on online shop options. For example, Connectors are available for Digital River, element5, share*it!, and Cleverbridge shops.

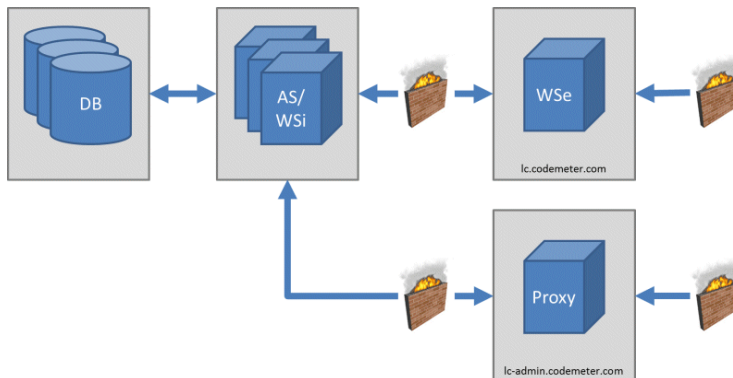
For direct license collecting from within your software our Standard Gateways are available.

4.4 Datacenter Edition

The CodeMeter License Central Datacenter Edition presents a cost-effective beginner version. You share a computer with other vendors but databases are separated. This architecture allows us to offer this cost-effective version.

Separated databases do not limit security considerations.

The Depot web pages on WSe are completely customizable to your individual corporate design. No restrictions apply.



CodeMeter License Central Datacenter Edition

Access is feasible either using lc.codemeter.com or lc-admin.codemeter.com.

4.5 Dedicated Server

If you opt for a Dedicated Server, you get an individual virtual machine with your CodeMeter License Central.

As part of this option you are able to use your own extensions, e.g. ticket binding to a serial number, and to directly access all webservices.

4.6 Features

Service	DataCenter Edition	Dedicated Server
Server providing	✓	✓
Installing and configuring CodeMeter License Central	✓	✓
Importing of operating system updates	✓	✓
Importing CodeMeter License Central updates	✓	✓
Monitoring availability	✓	✓
Monitoring and performing attack counter-measures	✓	✓
Daily database backup	✓	✓
Internet connection	✓	✓
Access to WebServer intern (client certificate)	✓	✓
Access to Connectors and Gateways	✓	✓
Customizable Depot pages	✓	✓
Access to all webservices		✓
Individual extension of CodeMeter License Central extensions		✓
CodeMeter License Central administration rights		✓
Availability	99,9%	99,9%
Price (per month)	€ 200 £ 187	€ 400 £ 374

Hosting Options CodeMeter License Central Compared

A migration from a Datacenter Edition to a Dedicated Server hosting option is feasible at any time.

We recommend the combination with a support agreement. Consulting and Professional Services included in the agreement are offset against hosting fees. Please inquire for an individual, custom-tailored offer.

WIBU-SYSTEMS offers a service level agreement for hosted solutions with an availability of 99,9 % for the "DataCenter Edition" and "Dedicated Server". Exempt are hereby planned times for service maintenance.

5 About Wibu Systems



WIBU-SYSTEMS was founded in 1989 by Oliver Winzenried and Marcellus Buchheit with a mission to provide state-of-the-art solutions for protecting and licensing software and digital media. Products from Wibu-Systems support virtually all operating systems and come in a broad variety of form factors, including independency and the variety of form factors, including USB, PC Card, Express Card|34, Compact Flash Card, SD Card, MicroSD-Card, and ASIC. Applications include software for desktop PCs, servers, embedded systems, mobile, smart phones, and cloud computing.

Wibu-Systems is a privately-held corporation with a worldwide staff of 80, the majority in the headquarters facility in Karlsruhe, Germany. Subsidiaries are in Seattle (USA), Shanghai, and Beijing (China), with offices as well in Belgium, Great Britain, the Netherlands, Portugal and Spain, and distributors in more than 25 countries. Corporate efforts stress achieving world-class quality in the areas of security, reliability, durability, support, and customer service.

More than 6,000 independent software vendors (ISV) rely on *CodeMeter* and *WibuKey* to sell more products by reducing piracy and increasing the flexibility of their licensing models. Products include:

- ┐ *CodeMeter CmDongle*, Wibu's newest architecture, allows for multiple ISVs to share a single dongle, easy online license transfers, and up to 8GB of flash memory
- ┐ *CodeMeter CmActLicense* is a software-based solution that protects software by binding to the characteristics of an individual PC
- ┐ *CodeMeter License Central* creates, manages, and delivers licenses with integration into sales and ERP systems
- ┐ *SmartShelter* allows for secure encryption of PDF documents
- ┐ *CodeMeter SDL* (Secure Data Layer) protects data files including audio, video, and database
- ┐ *Authentication Solutions* allow for easy and safe access to websites and hosted software applications (SaaS).

Wibu-Systems is a certified ISO 9001:2008 manufacturer and is an active member of BITKOM, VDMA, SIIA, and participates with standards organizations such as PCMCIA, USB Implementers Forum, and the SD Card Association. Additionally, Wibu-Systems is a Microsoft Gold Certified Partner, Windows Embedded Partner, and partner in developer programs of Apple, Adobe, Autodesk, Wind River, and others. Products from Wibu-Systems have received multiple industry awards including the SIIA CODiE Award for "Best Digital Rights Management" solution and the international iF Product Design Award. The company is leading different research project with universities and other companies, in parts funded by the German BMBF and BMWi. Examples include Pro-Protect with the aim of providing effective solutions to the manufacturing sector against product counterfeiting, VitaBIT for secure mobile solutions for health care, SumoDacs with solutions for mobile data access, and both MimoSecco and S4Cloud in the realm of cloud computing.

Document information

Author:	Marcel Hartgerink
On:	17/06/2013
Version:	3.60

6 Contact details

For Free Support, Silver Support & Gold Support

UK & Ireland

Wibu-Systems Ltd
The Mansion | Bletchley Park | Bletchley
MK3 6DS Milton Keynes | United Kingdom
Tel.: +44-20-314 747 27 | Fax: +44-20-314 747 28
www.wibu.com/uk | support@wibu.co.uk

Spain & Portugal

Wibu-Systems Iberia
Ribera del Loira 46 | Campo de las Naciones
28042 Madrid | Spain
Tel.: +34-91-414 8768 | Fax: +34-91-414 8769
www.wibu.com/es | support@wibu.es

Netherlands

Wibu-Systems BV
Adam Smithstraat 33 | NL-7559 SW Hengelo
Tel.: +31-74-7501495 | Fax: +31-74-7501496
www.wibu.com/nl | support@wibu-systems.nl

Belgium & Luxembourg

Wibu-Systems NV
Drie Eikenstraat 661 | B-2650 Edegem
Tel.: +32-3-400 03 14 | Fax: +32-3-400 28 40
www.wibu.com/uk or www.wibu.com/nl | support@wibu.be

France

WIBU_SYSTEMS sarl
20-22, Rue des Petits Hôtels | 75010 Paris
Tél: +33 (0)1 73 03 04 91 | Fax +33 (0)1 73 03 04 01
www.wibu.com/fr | support@wibu.fr

Germany, Austria, Switzerland

Wibu-Systems AG
Rueppurrer Str. 52-54 | 76137 Karlsruhe, Germany
Tel.: +49 721 931 72 16 | Fax: +49 721 931 72 22
www.wibu.com | support@wibu.com

Rest of world

See <http://www.wibu.com/en/wibu-international.html>

For Rhine Gold Support from Karlsruhe

Wibu-Systems AG
Rueppurrer Str. 52-54 | 76137 Karlsruhe, Germany
Tel.: +49 721 931 72 16 | Fax: +49 721 931 72 22
www.wibu.com | support@wibu.com